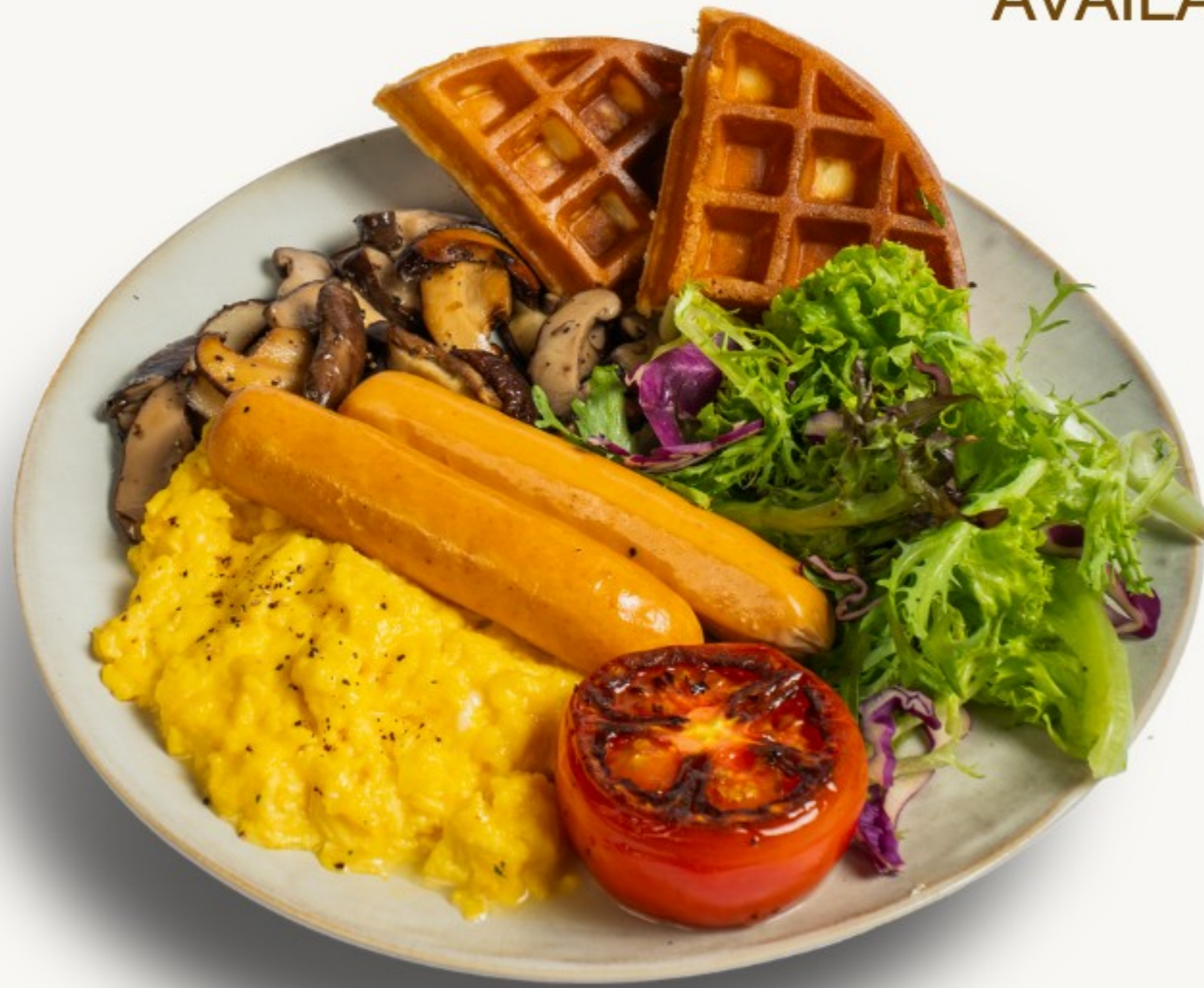




WEEKEND BRUNCH TIME

AVAILABLE SAT, SUN & PH ONLY



MORNING WAFFLE DELIGHT

17.9

BELGIUM WAFFLE SERVED WITH SCRAMBLED EGGS, GRILLED CHICKEN SAUSAGE, GRILLED TOMATO, SAUTÉED MUSHROOMS, AND A SIDE SALAD.

CROISSANT BREAKFAST PLATE

17.9

CROISSANT SERVED WITH SCRAMBLED EGGS, GRILLED CHICKEN SAUSAGE, GRILLED TOMATO, SAUTÉED MUSHROOMS, AND A SIDE SALAD.



SIGNATURE BREAKFAST

15.9

GARLIC BUTTER FOCACCIA SERVED WITH SCRAMBLED EGGS, CHICKEN SAUSAGE, GRILLED TOMATO, SAUTÉED MUSHROOMS, AND A SIDE SALAD.



ALL PRICES ARE SUBJECT TO 10% SERVICE CHARGE AND 9% GST.
IMAGES ARE FOR ILLUSTRATION PURPOSES ONLY.



WEEKEND BRUNCH TIME

AVAILABLE SAT, SUN & PH ONLY



GREEK YOGURT WITH HOMEMADE GRANOLA

9.9

GREEK YOGURT WITH BERRIES
COMPOTE, FRESH BERRIES AND
HOME MADE GRANOLA

FRENCH TOAST WITH BERRIES AND CREAM

13.9

BRIOCHE FRENCH TOAST SERVED WARM
WITH MIXED BERRIES COMPOTE AND
FRESH BERRIES



FRENCH TOAST WITH SCRAMBLE EGG AND CHICKEN BRATWURST

14.9

BRIOCHE FRENCH TOAST SERVED WARM WITH
SCRAMBLE EGG AND CHICKEN BRATWURST



ADD-ONS

JUMBO SAUSAGE 3.5 | SCRAMBLED EGGS 2.5

CROISSANT 3.5 | GARLIC BUTTER FOCACCIA (2 PCS) 2.5

ALL PRICES ARE SUBJECT TO 10% SERVICE CHARGE AND 9% GST.
IMAGES ARE FOR ILLUSTRATION PURPOSES ONLY.